



CH-K 80 & -K 100

Specifications:

Direct fired absorption chiller heater with H₂O/LiBr solution
 System functionality provides Cooling & Heating
 with an automatic control mode
 Utilizing Natural Gas



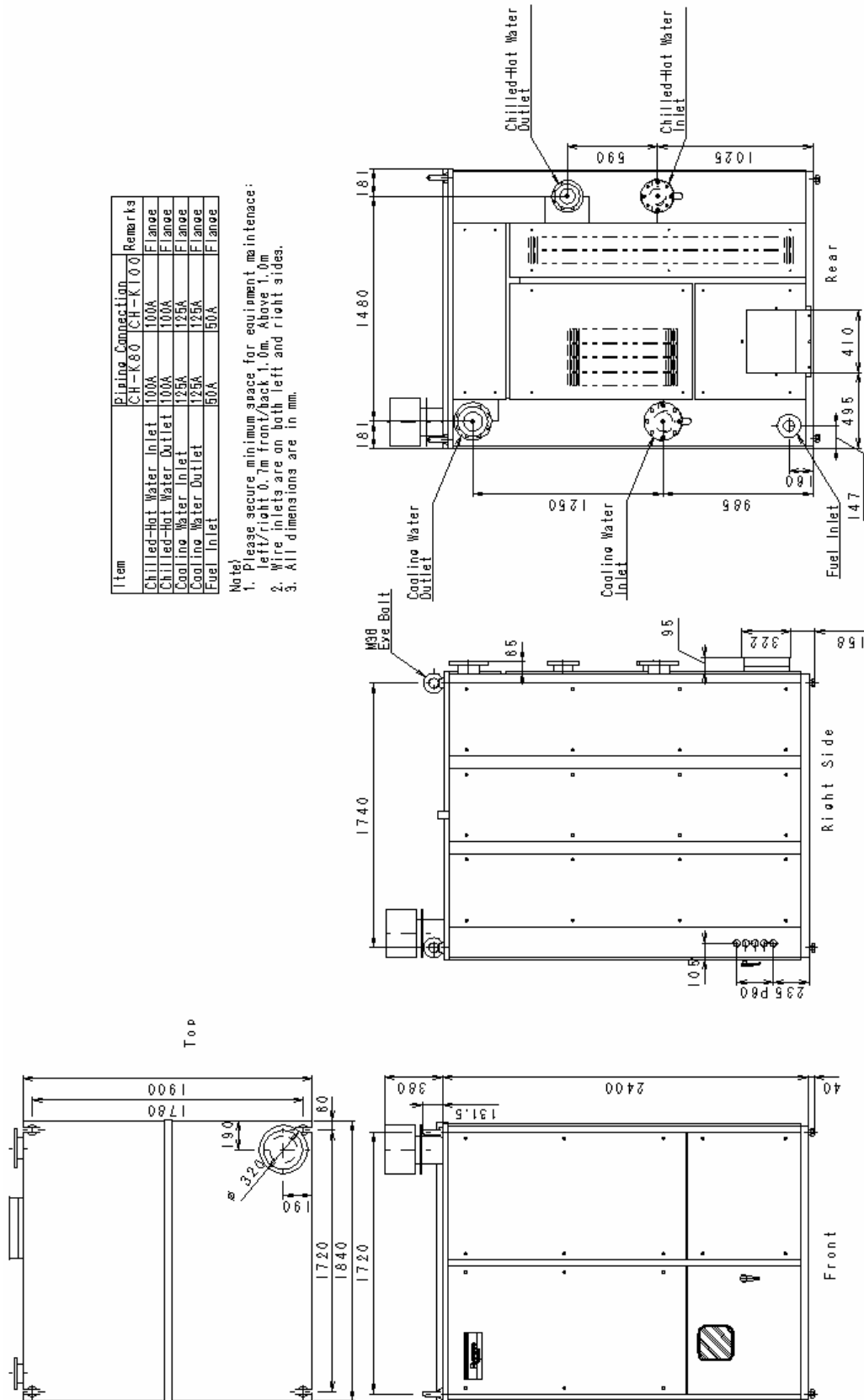
ITEM		MODEL		CH-K80	CH-K100	
Cooling Capacity				kW	281	352
Heating Capacity				kW	229	286
Chilled Water and Hot Water	Chilled Water Temperature	Inlet	°C	12.5		
		Outlet	°C	7.0		
	Hot Water Temperature	Inlet	°C	50.5		
		Outlet	°C	55.0		
	Evaporator Pressure Loss(Max) *3		kPa	86.4	97.0	
	Max Operating Pressure		kPa	588		
	Rated Water Flow		L/sec	12.2	15.3	
Water Retention Volume		m ³ /hr	43.9	55.1		
		L	241	306		
Cooling Water	Heat Rejection		kW	510	638	
	Cooling Water Temperature	Inlet	°C	29.5		
		Outlet	°C	35.5		
	Abs.&Cond.Pressure Loss(Max) *3		kPa	70.1	102.5	
	Max Operating Pressure		kPa	588		
	Rated Water Flow		L/sec	20.3	25.4	
	Water Retention Volume		m ³ /hr	73.1	91.4	
		L	411	534		
Fuel	Type of fuel			Natural Gas		
	Consumption	Cooling	kW	276	345	
Heating		kW	276	345		
Electrical	Power Supply		kPa	400VAC 50Hz 3ph. & Neutral		
	Consumption	Cooling	W	2,300	2,500	
		Heating	W	2,300	2,500	
	Control	Cooling		High fire(100%), Low fire(70%), Off		
Heating			High fire(100%) On, Off			
Combustion	Type			Forced draft		
	Ignition			Electric intermittent spark		
	Flame detection			Flame rectification(Flame rod)		
Dimension	Width	mm		1,840		
	Depth	mm		1,900 (1,995)		
	Height *2	mm		2,435 (2,820)		
Piping	Chilled Water	A		100		
	Cooling Water	A		125		
	Gas supply	A		50		
Weight	Dry Weight	kg		3,400	3,700	
	Operation Weight	kg		4,060	4,540	

*1. Power consumption of Chiller Only.(excluding recirculating pumps and cooling tower fan)

*2. Dimension in() include fixed plate and vent cap.

*3. Specification are subject to change without prior notice.

*.Fuel consumption is calculated based on higher heating value : 46,047 kJ / Nm³



Item	Piping Connection	Remarks
Chilled-Hot Water Inlet	CH-K80	CH-K100
Chilled-Hot Water Outlet	100A	Flange
Cooling Water Inlet	100A	Flange
Cooling Water Outlet	125A	Flange
Fuel Inlet	50A	Flange

- Note)
1. Please secure minimum space for equipment maintenance:
left/right 0.7m front/back 1.0m, Above 1.0m
 2. Wire inlets are on both left and right sides.
 3. All dimensions are in mm.